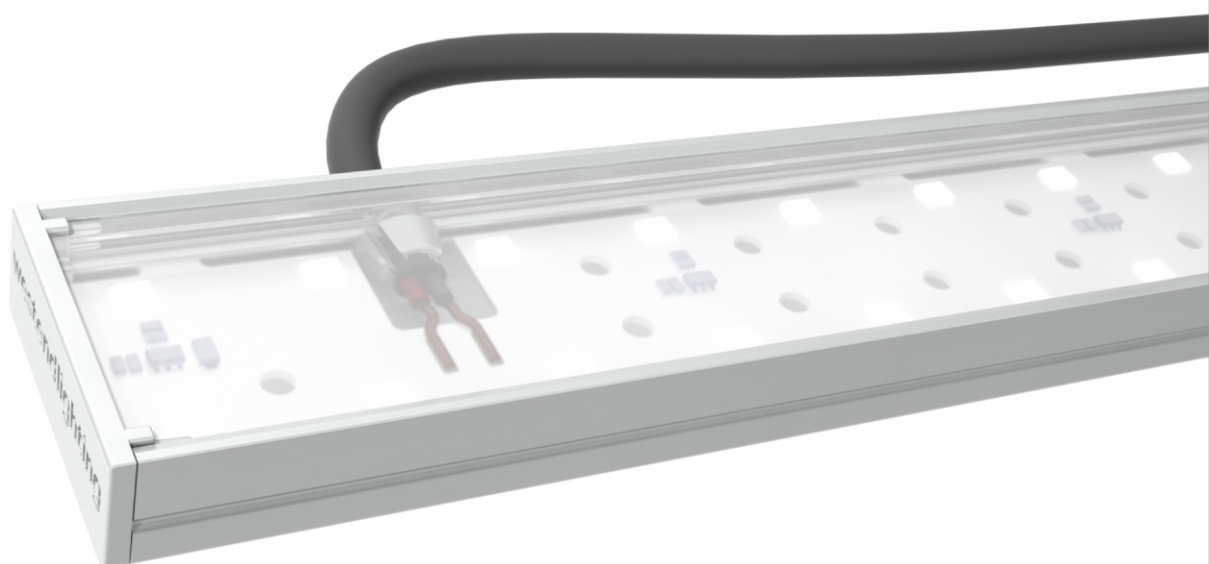




westendlighting

Life saving light

LINEA32 STANDARD LED LIGHT LINE

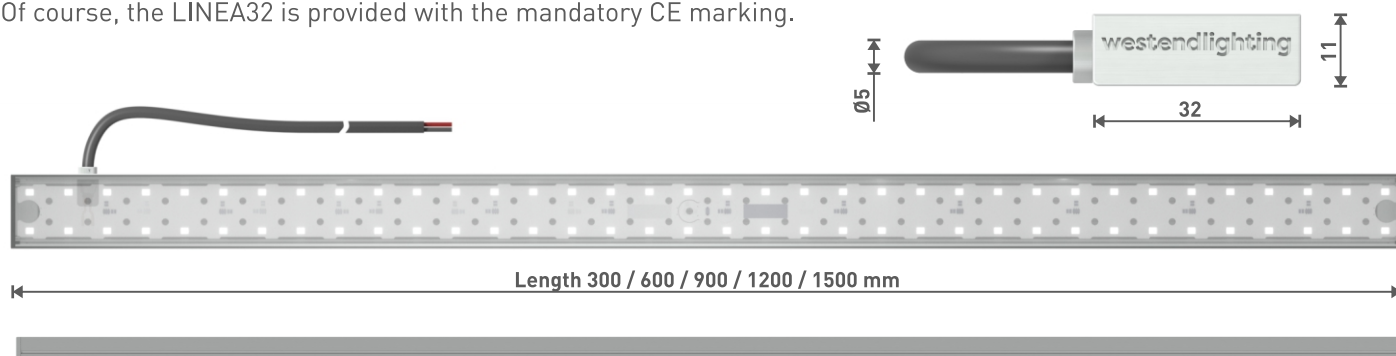


LINEA32 – a customized profile, designed for decorative applications

The LINEA32 series of Westend Lighting offers lighting designers and architects the possibility to use their creativity to the full. Its variable lengths enable seamless continuous light lines without any shadows. Furthermore, the LINEA32 is only 32mm wide and 11mm high, which provides endless opportunities to use this LED module in your specific application. In short; a profile that answers any designers question!

The standard colors that you can choose from are various shades of white, but also RGB and Tunable White are available upon request. The profile is supplied with a black cable of 1 meter and can be applied both indoor and outdoor. The aluminum carrier is potted with transparent material to make it suited for a temperature range between -20°C and +50°C.

Of course, the LINEA32 is provided with the mandatory CE marking.



Applications

Decorative accent lighting

Cove or shelf lighting

Railing or banister lighting

Architectural project lighting

Installation and safety information

Installation must comply with the relevant regulations and standards.

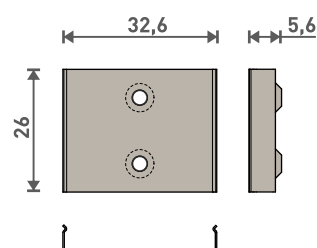
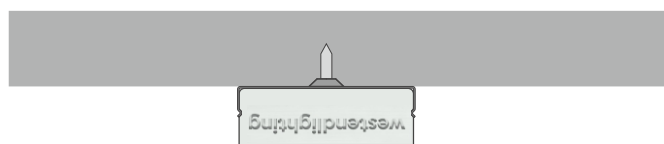
Please take following guidelines into consideration:

- Installations must be carried out in a voltage free state.
- Do not bend or flex the module, this may damage the components inside the module.
- The device/module contains components that are sensitive to electrostatic discharge and may only be installed on site if appropriate EOS/ESD protection measures have been taken.
- Please ensure the correct polarity of the leads. Reverse polarity connection may damage the LEDs.

All above specifications must be met to qualify for the 2-year warranty.

Installation brackets

For easy installation, metal brackets are included.



Specifications

| | | | |
|-----------------------|---------------------------------------|--------------------------|--|
| Electrical properties | Constant voltage powered module 24VDC | Size | 32 x 11 mm, Lengths 300 / 600 / 900 / 1200 / 1500 mm |
| Connection | Fixed cable length of 1000mm | Materials | Housing: anodised white aluminium |
| Lifetime (L70) | > 50.000 hrs | Ambient temperature (Ta) | -20°C / +50° C |
| Lightsource | Mid power LED | IP | 65 (PU-potting material) |
| Luminous flux (Lm/W) | 74 | | |

Product overview LINEA32

Data are all typical values.

| CCT (K) | Length (mm) | Light output (Lm) | Current (A) | Power (W) | Article code |
|---------|-------------|-------------------|-------------|-----------|---------------------|
| 3000 | 300 | 630 | 0,4 | 9 | 830.WES.016.30.830 |
| | 600 | 1270 | 0,7 | 17 | 830.WES.016.60.830 |
| | 900 | 1900 | 1,1 | 26 | 830.WES.016.90.830 |
| | 1200 | 2530 | 1,5 | 34 | 830.WES.016.120.830 |
| | 1500 | 3160 | 1,8 | 43 | 830.WES.016.150.830 |
| 4200 | 300 | 630 | 0,4 | 9 | 830.WES.016.30.840 |
| | 600 | 1270 | 0,7 | 17 | 830.WES.016.60.840 |
| | 900 | 1900 | 1,1 | 26 | 830.WES.016.90.840 |
| | 1200 | 2530 | 1,5 | 34 | 830.WES.016.120.840 |
| | 1500 | 3160 | 1,8 | 43 | 830.WES.016.150.840 |
| 5300 | 300 | 630 | 0,4 | 9 | 830.WES.016.30.855 |
| | 600 | 1270 | 0,7 | 17 | 830.WES.016.60.855 |
| | 900 | 1900 | 1,1 | 26 | 830.WES.016.90.855 |
| | 1200 | 2530 | 1,5 | 34 | 830.WES.016.120.855 |
| | 1500 | 3160 | 1,8 | 43 | 830.WES.016.150.855 |
| 6700 | 300 | 630 | 0,4 | 9 | 830.WES.016.30.865 |
| | 600 | 1270 | 0,7 | 17 | 830.WES.016.60.865 |
| | 900 | 1900 | 1,1 | 26 | 830.WES.016.90.865 |
| | 1200 | 2530 | 1,5 | 34 | 830.WES.016.120.865 |
| | 1500 | 3160 | 1,8 | 43 | 830.WES.016.150.865 |



Safety instructions

The light engine must operate under proper environmental conditions. These modules are designed to function in an environment with a maximum ambient temperature of 50°C.

For an optimal lifetime performance, the light engine must be placed in such a way that the air should be able to flow freely around the luminaire. It is not recommended to expose the module to direct sunlight or any other heat source.





Westend Lighting B.V.
Leemstraat 40 - 44
4705 RH Roosendaal
The Netherlands

T +31 (0)85 - 487 9670

www.westendlighting.eu
sales@westendlighting.eu



Westend Lighting, strong in tailor-made LED solutions

Thanks to years of experience in developing and producing light products of very high quality, you can rely on Westend LED light lines to function trouble-free.

In our factory in Roosendaal, the Netherlands, we develop and produce high quality LED light lines for applications in traffic, industry and public environments.

